



Sonoma Water

Clean. Reliable. Essential. Every Day.

Russian River County Sanitation District Update

May 7, 2026

Emma Walton, Operations Manager

Kent Gylfe, Director of Engineering

Jake Spaulding, Financial Services Manager

    sonomawater.org



Russian River County Sanitation District Update

Agenda

- Brief Overview of the District
- Projects, Plans, and Studies
- FY 2026-2027 Proposed Projects and Budget
- FY 2026-2027 Proposed Rates
- Community Engagement and Education

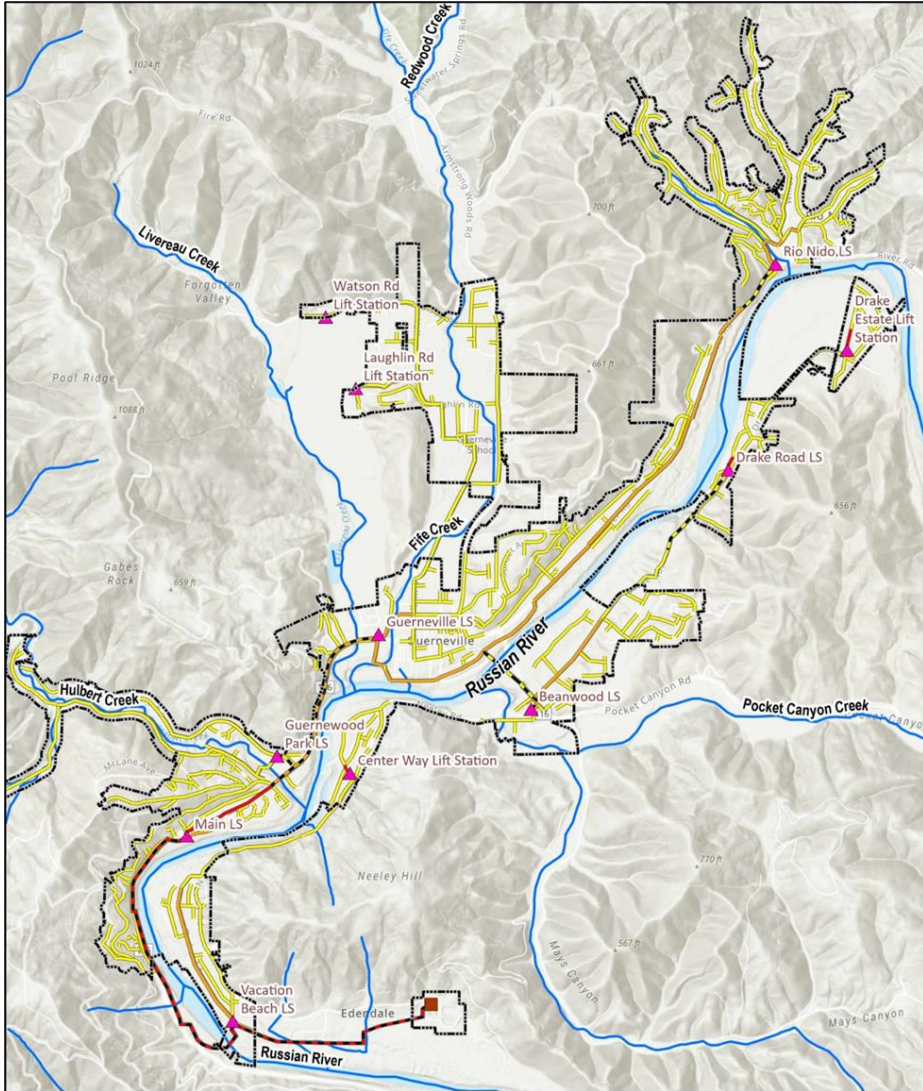


Russian River County Sanitation District

- Service area of 2,700 acres (~4 square miles)
- Serves approx. 3,232 Equivalent Standard Dwellings (ESD)
- Infrastructure build in the 1970s/1980s
- Plant became operational 1983
- Sonoma Water took over operations & maintenance in 1995



Collection System



- 11 lift stations and 45 miles of sewer pipe
- 11 miles of sewer lines cleaned annually and targeted CCTV conducted annually
- Full system CCTV and I/I study planned for 2026/27



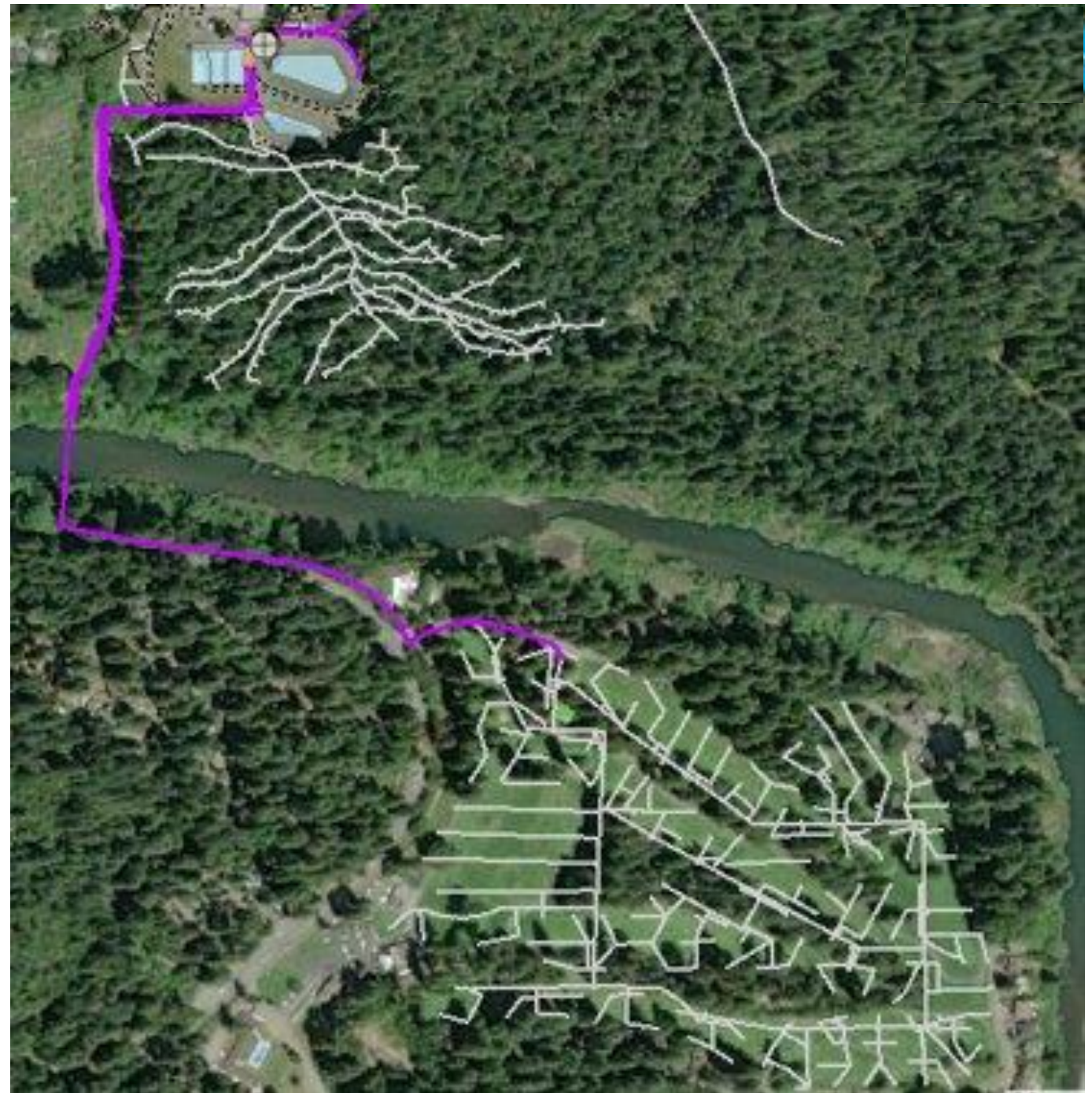
Treatment Plant Flow Capacity

Current Average Dry Weather Flow (ADWF)	0.3 million gallons per day
Current permitted ADWF	0.51 million gallons per day
Treatment plant design ADWF	0.71 million gallons per day
Treatment plant permitted/design Peak Wet Weather Flow (PWWF)	3.5 million gallons per day
During flood events	5+ million gallons per day
Emergency storage	1 million gallons



Recycled Water

- Plant has 3.5 MG of treated effluent storage
- From May 15 to Sept 30, treated effluent is used to irrigate forested land adjacent to the plant and 43 acres of Northwood Golf Course



Headworks, Lift Stations, and Force Mains Project



Background

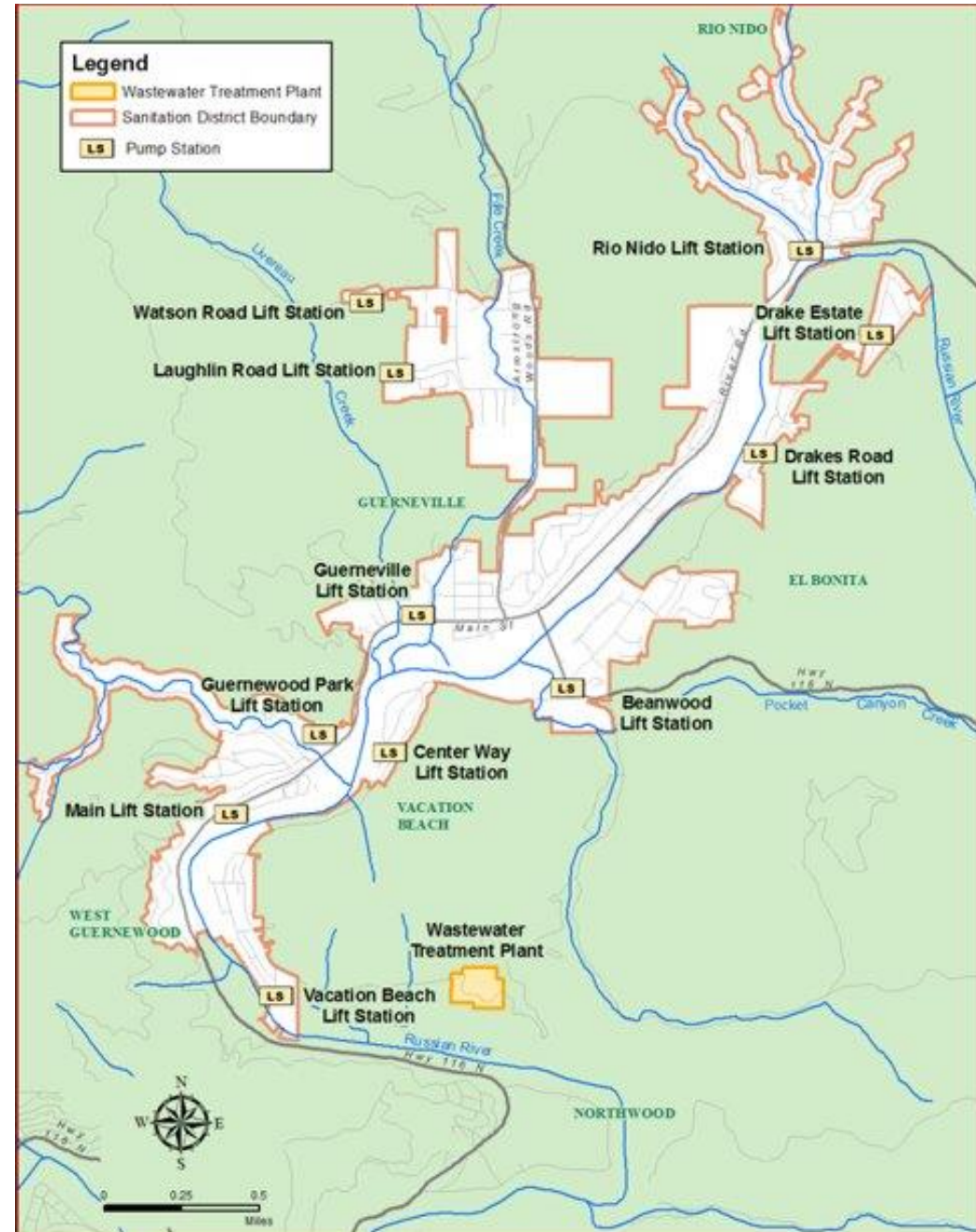
- 2014 Main Force Main Rupture Enforcement Action by North Coast RWQCB
- 2017 Initial Grant Application
- 2019 Supplementary Grant Application
- 2020 Awarded \$810,000 for assessment and initial design



System built in 1970's & 1980's

Project Purpose

- Upgrade aged force mains, lift station mechanical and electrical equipment, and headworks at the treatment facility

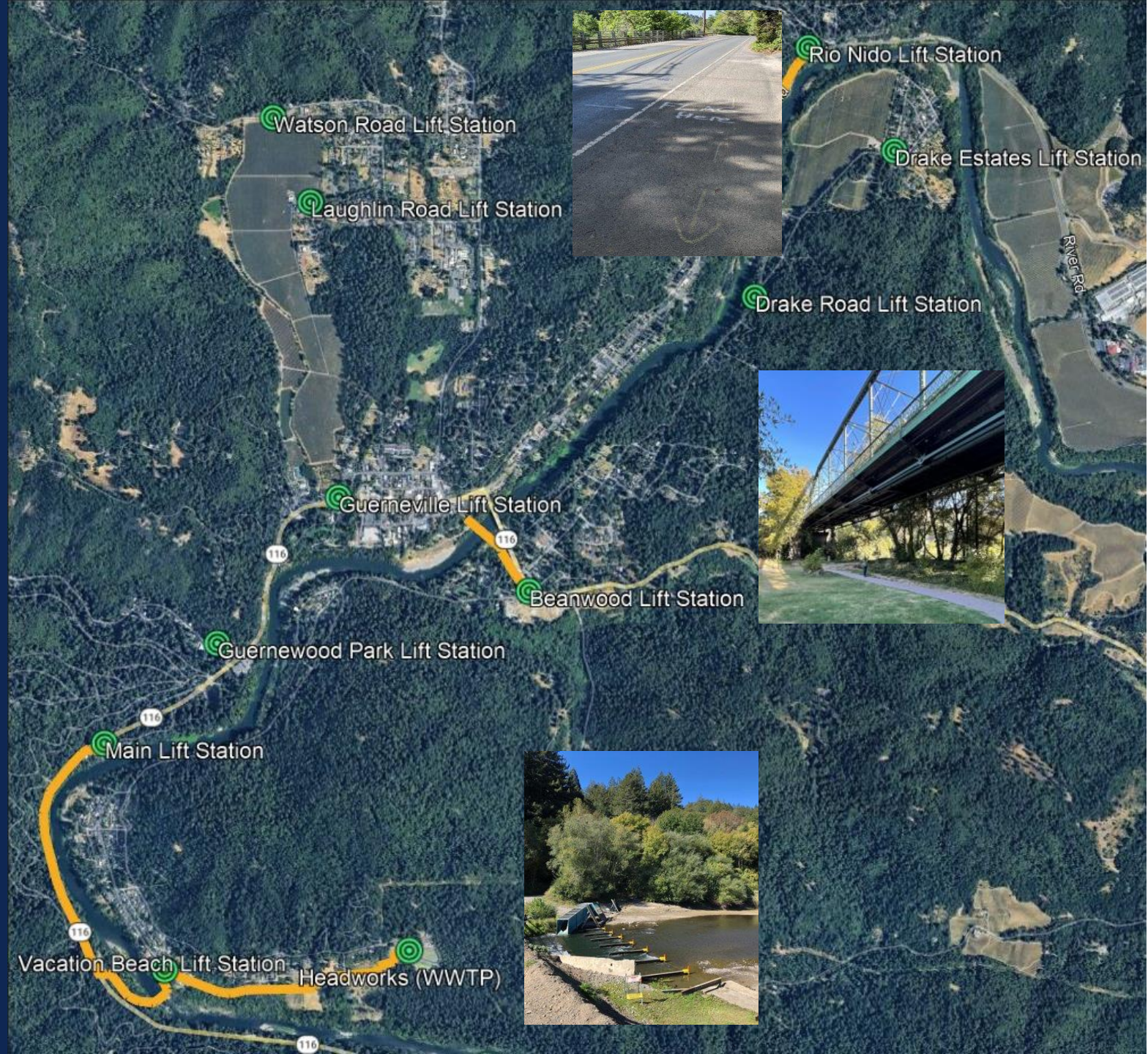


Force Main Improvements

Rio Nio Lift Station Force Main

Beanwood Lift Station Force Main

Main Lift Station Force Main



Lift Station Improvements

Mechanical Improvements

- Replace pumps, discharge elbows, guide rails and brackets
- Install new flowmeters

Electrical Improvements

- Dedicated PG&E Power
- Provide new generators
- Install new emergency site lighting

Site Improvements

- Elevate new equipment out of flood zones
- Construct new chain link access gate



Wastewater Treatment Plant Improvements

Headworks

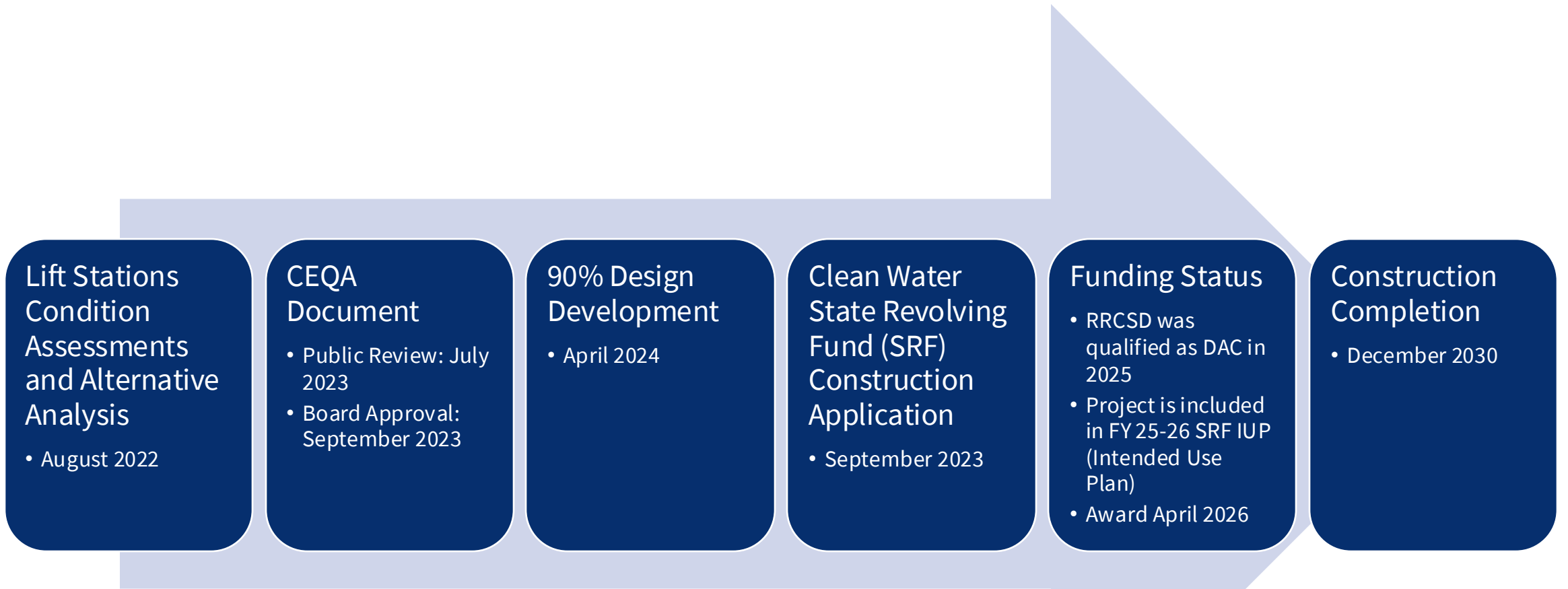
- Flowmeters
- Concrete Lining
- Bar Screen
- Replace Corroded Metal

Grit Chamber

- Pumps
- Air Supply
- Grit Disposal
- Concrete Lining



Project Progress



Estimated Construction Cost

Construction	Estimated
Treatment Plant	\$ 3.05 M
Force Mains	\$ 19.75 M
Lift Stations	\$ 19.99 M
Total	\$ 42.76 M

Total grant funding including contingencies and soft costs, real property and easement acquisition is \$47.7M and eligible for 100% award.



District Projects, Plans, and Studies

Collection System

- Complete an assessment of all manholes vulnerable to flooding
- Update storm preparedness procedures
- Collection system inflow and infiltration study, workplan and final report

Treatment Plant

- Treatment plant capacity assessment
- Aeration basin and secondary process study
- Additional equalization basin high-flow storage planning

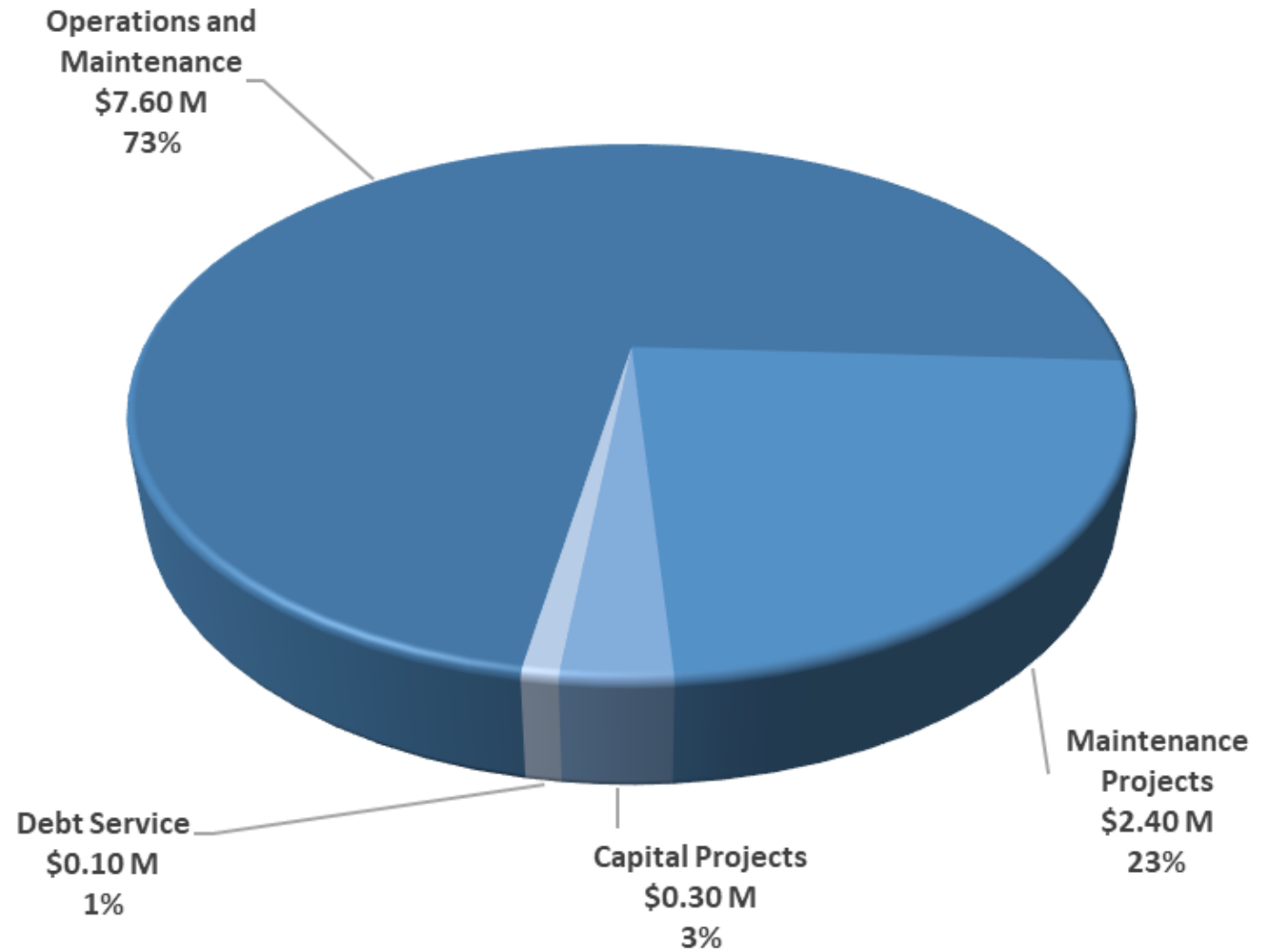


Flooding at Armstrong Woods Road on March 14, 2023



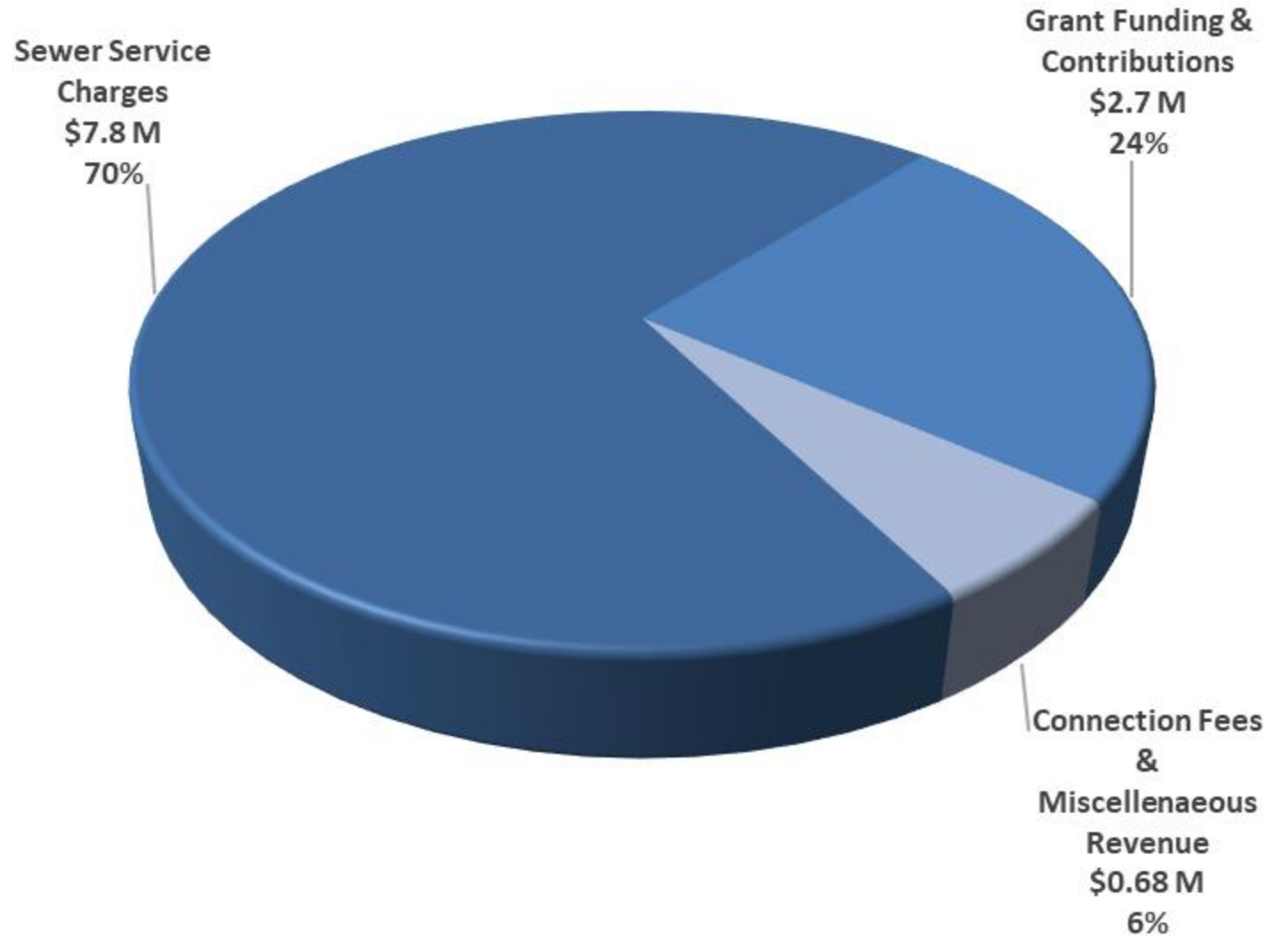
FY26-27 Budgeted Expenditures

\$10.4 Million



FY26-27 Budgeted Revenue

\$11.2 Million



FY26/27 Proposed Rate Increase

Russian River County Sanitation District

	ESDs	Annual Rate Per ESD	Annual Increase per ESD	Monthly Rate per ESD	Monthly Increase per ESD	Rate Increase	Revenue Increase
FY 25/26	3,232	\$2,486	\$194	\$207.17	\$16.17	8.50%	\$627,008
Proposed FY 26/27	3,252	\$2,696	\$210	\$224.67	\$17.50	8.50%	\$682,920

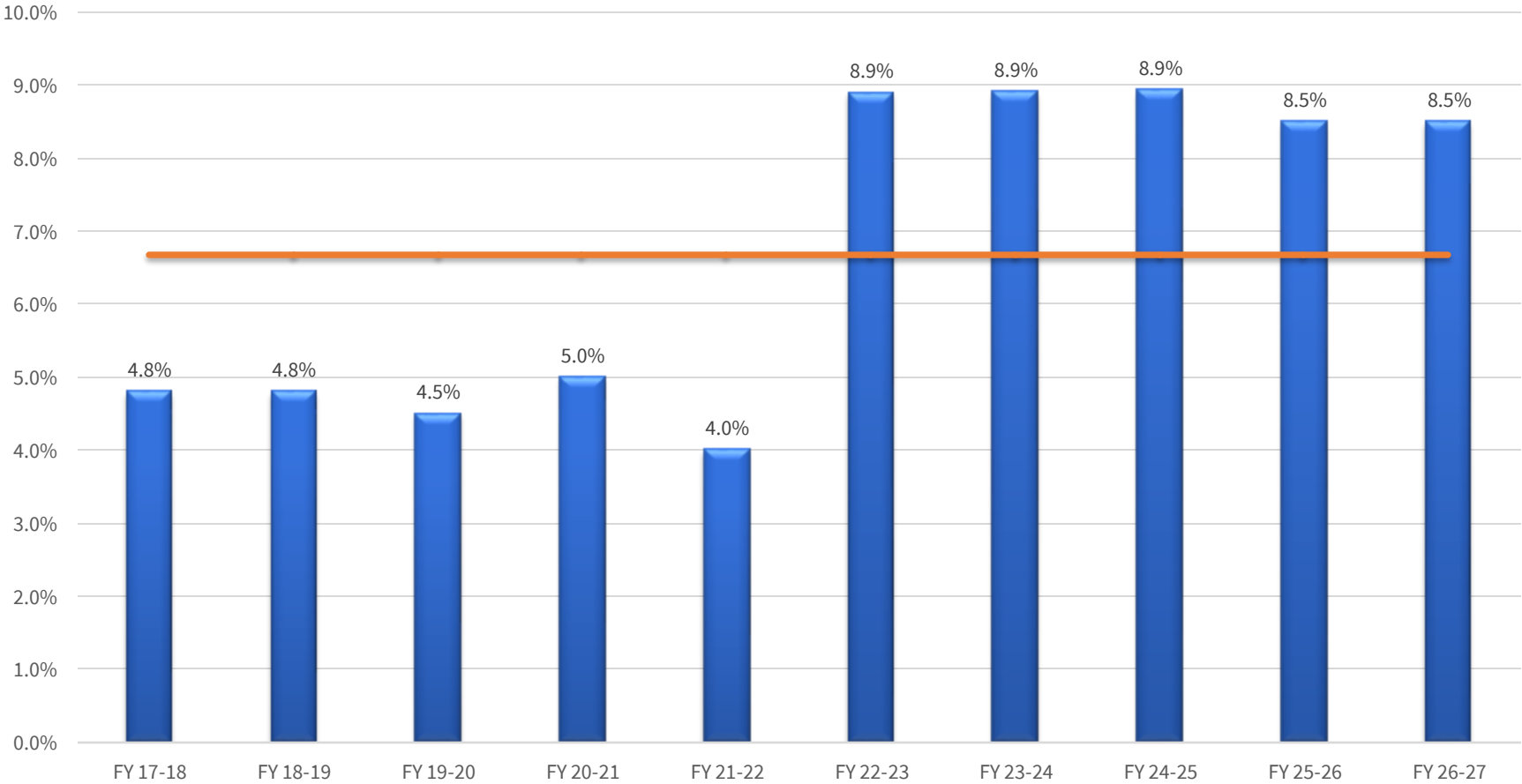


Russian River County Sanitation District Grants and Contributions

State Revolving Fund	47.76 million	Secured
Community Project Funding Congressman Huffman Equalization Basin Project	1.42 million	Selected by Congressman Huffman, submitted to House Appropriations Committee
Water Resources Development Act	65 million	Request submitted to Senators Padilla and Schiff and Congressman Huffman
Sonoma Water General Fund	2.15 million	Pending approved on 5/12



Russian River County Sanitation District Rate Increases




Community Engagement

- Sanitation Rate Relief Program
- Public Tours of sanitation facilities
- Monthly Staff at West County Services Center (bilingual)
- Annual Prop. 218 Newsletters



Community Engagement: Prop 218 Newsletter



Sonoma Water

SPRING 2026 NEWS
Vol. 14, Issue #1

Russian River County Sanitation District

INSIDE

- 1 Sanitation Rate Relief Program and Rebates
- 2 Budgets and Sewer Service Charges
- 3 Prop-218
- 4 Rate Protest Form

Thanks to the customers of the Russian River County Sanitation District for their help in reducing usage of the sewer collection system and thereby reducing the impacts of the spill at the treatment plant in early January. The district responded to the wastewater spill that began Jan. 6 when heavy rainfall and floodwaters from a storm entered the collection system, overwhelmed the facility and caused it to exceed capacity, resulting in a discharge of untreated wastewater into the Russian River. Staff worked to immediately assess the situation and notify customers. By Jan. 8, as river levels receded the spill stopped, and on Jan. 9, water quality sampling results allowed health officials to lift advisories at 13 coastal beaches downstream from the spill, with additional results leading to all remaining advisories being lifted on Jan. 12. The district will continue working with the Lower Russian River Municipal Advisory Council to engage our community on an action report. A community town hall with the advisory council will take place in Fall 2026 to discuss this matter further. For more information visit SonomaWater.org/ncsd.

West County study reviews future wastewater needs for the lower Russian River

Sonoma Water's West County Water Quality and Recycled Water Supply Feasibility Study is helping outline long-term options for wastewater services in western Sonoma County. A major part of the study focuses on how extending service to unsewered parcels, new regulations, and changing weather patterns may affect wastewater treatment and collection needs in the lower Russian River area. A technical engineering review identifies several potential opportunities for the district's facilities. The study looks at how the treatment plant might handle higher flows for certain project alternatives. The plant's proximity to the practical connection point if those areas move forward with sewer service, and some nearby unsewered parcels may also be candidates for future service. The review also highlights several challenges. Parts of the collection system require significant upgrades. Portions of the treatment plant will need repair or replacement, and there is limited room for expanded storage of water. The plant's distance from other west county sewer systems also limits opportunities for larger regional consolidation. These findings could help guide long-term planning and investment decisions for the lower Russian River area. Protecting the existing system remains a major focus. Items like rags, wipes and fats, oils and grease continue to enter the sewer system, where they clog pumps, block pipes and make treatment less efficient. These materials should be placed in the trash, not flushed or poured down drains. Keeping them out of the system reduces emergency repairs, which in turn reduces costs and helps maintain reliable service for the community. To learn more about the Draft Feasibility Study Report and the public stakeholder committee meetings, go to SonomaWater.org/WestCountyStudy.

Maintaining and Repairing Aging Infrastructure

Since 1995, Sonoma Water has been dedicated to managing eight vital wastewater districts and zones across Sonoma County. Many of the systems have served the community for decades, ranging from 43 years in areas like Russian River to over 70 years in Sonoma Valley and Occidental. The challenge of aging systems as our collection and treatment infrastructure ages, the need for continuous maintenance and periodic replacement becomes more critical. At the same time, we must navigate increasingly strict water quality regulations, which continue to drive up both operational and capital compliance costs. Because many of the districts are small, these rising expenses are shared among a limited number of ratepayers, intensifying the financial impact on each customer. Balancing needs and affordability while proposed rate increases for the districts are higher than in the recent past, these adjustments are essential. They allow us to:

- Maintain and replace critical aging infrastructure.
- Address deferred maintenance to prevent more costly repairs in the future.
- Protect public health and the environment through responsible system management.

Sonoma Water is sensitive to the financial strain these increases may cause. To help offset a capital project costs and reduce the burden on ratepayers, we are actively pursuing grants and loans. In the sections below, you will find specific details regarding the proposed rate increase for your district or zone. We have also included a clear breakdown of how funds are collected and allocated, along with a list of planned infrastructure projects for the upcoming year.

Budget Approval

The draft proposed budgets for all sanitation districts and zones are available for review now at Sonoma Water's office located at 404 Aviation Boulevard, Santa Rosa, California 95403, and on Sonoma Water's website at SonomaWater.org/Current-Budget. In addition, owners of the properties in districts and zones receive notice of the proposed rates in this newsletter. The public can protest rate increases up to the date of the rate hearings, which this year are scheduled for May form and rate hearing information are available on pages 5-7 of this notice.

	FY25-26	FY26-27 Proposed
ESDs	3,232	3,252
Annual Rate per ESD	\$2,486	\$2,696
Annual Increase	\$194	\$210
Monthly Rate per ESD	\$207.17	\$224.67
Rate Increase	\$16.17	\$17.50
	8.5%	8.5%
Increased Revenue	\$627,008	\$682,920

*Fixed Rate sewer bills are calculated based on usage of an Equivalent Standard Dwelling ("ESD"). An ESD is defined as what an average single family home would use in a given year.

FY26-27 Budgeted Expenditures - \$10.4 Million

Maintenance Projects - \$2.4 Million

- Air Scrubber Maintenance & Electrical/Instrumentation
- Maintenance Services
- Biosolids Disposal Services
- Collection System Rehabilitation and Repairs
- LF 5 Station Automatic Transfer Switch Build
- Main LF 5 Station Pump Control Replacement
- Rate Study, SCADA, Sanitation Planning & Regulatory Permitting Assistance
- Recycled Water System Access Maintenance
- RR Redwoods Property Inspection
- Russian River Redwood Forest Management Services
- Sewer Collection Inflow and Infiltration Study, Development Analysis, and Model Update
- Treatment Plant Concrete Grounds Maintenance
- Treatment Process Special Studies
- Wet Weather Sewer Hauling Services

Capital Projects - \$0.3 Million

- Capacity Improvements
- Headworks, LF 5 Station, and Force Main Project

Other Expenditures

- Debt Service: \$100,000 (2%)
- Operations and Maintenance: \$1,000,000 (2%)
- Maintenance Projects: \$2,400,000 (23%)

About Your District

In 1995, Sonoma Water assumed responsibility from the County of Sonoma for managing the county sanitation zones and districts, including your district. The Russian River County Sanitation District, which began operations in 1983, serves 3,232 Equivalent Single-Family Dwellings within a 2,700-acre service area.

The sanitation facility has a design capacity of 110,000 gallons per day (average daily dry-weather flow) and treats wastewater to tertiary treatment levels (also referred to as advanced wastewater treatment). High-quality tertiary treated recycled water is an important source of water and its use offsets potable water demands. Between Oct 1 and May 14, recycled water from the treatment plant is discharged into the Russian River. Between May 15 and Sept. 30, recycled water is used to irrigate the Northwood Golf Course and forests adjacent to the treatment plant.



Join a Public Tour at the Russian River County Sanitation District Treatment Plant!

May 2nd, 2026
10:00 am - 11:30 am
Scan the QR code to register




Russian River County Sanitation District Sanitary Sewer System Spill Notification Program

The Russian River County Sanitation District is offering customers a notification program designed to provide alerts during sanitary sewer system spills.

Spills may occur during heavy rain events or periods of "high-water flow" in the Russian River. During these events, Sonoma Water crews will respond to the incident. In cases where there are potential impacts to customers, Sonoma Water has provided a platform for communication and updates. Opting into voice calls, text messages, and/or email notifications will ensure that you receive up-to-date information about the impacts of these spills in your area.

To issue these notifications, Sonoma Water is using an alert and notification system which securely stores contact data and allows Sonoma Water staff to issue notifications to multiple contact points simultaneously. The information provided will be used only for these specific notifications.

To opt into this notification service, please add your information in this form: SonomaWater.org/RRCSO-Notification-Opt-In.



Sanitation Rate Relief Program

Apply by July 10, 2026

SANITATION RATE RELIEF PROGRAM

Low-income homeowners
and **non-profit**
organizations that provide
housing to low-income renters
may apply for a discount on
sewer service charges on
property tax bills.

Learn more and apply:
sonomawater.org/srrp
(707) 521-1885



Sonoma
Water



Pollution Prevention Outreach

in print and on social media



Yes, you CAN!
Always cool and dispose of kitchen fats, oils, and grease in compost or trash.

NEVER pour fats, oil and grease down the drain or garbage disposal.

Sonoma Water

NUNCA deseches las toallitas
Incluso los productos etiquetados como "desechables" provocan obstrucciones significativas en las tuberías de aguas residuales.

¡Tira siempre las toallitas usadas a la basura!

Sonoma Water

ATTENTION!

Sanitation crews have observed sewer issues in your neighborhood!

Fats, Oils and Grease (FOGs) Cause Clogs Down the Drain Throw Them Away Instead!

- FOGs stick inside of your sewer pipes.
- Hot water and soap used to wash FOGs will cool and harden in sewer laterals and mains.

Safe disposal of FOGs:

- 1 Cool off hot grease in a container, or wipe your pan with a paper towel,
- 2 Trash it, compost it, or for large quantities of oil or grease, find out where you can recycle it locally.

Flushed Wipes Clog Pipes Toilets are not trashcans!

When flushed, wipes catch on tree roots. When mixed with FOGs, they weave together to create giant rags that get stuck in sewer collection systems, causing backups and equipment failures.

Only flush 3 things down the toilet

- 1 Pee,
- 2 Poo,
- 3 Toilet Paper

Help Prevent Overflows and Backups!

For more information on Sanitary Sewer Overflows, visit: SonomaWater.org/PollutionPrevention

Sonoma Water



Water Use Efficiency Rebates

Water conservation at home!

- Front Load High-Efficiency Clothes Washer Rebate: Up to \$125
- High-Efficiency Toilet Rebate: Up to \$150

Learn more and apply:

- SonomaWater.org/Sanitation-Rebates
- or call **(707) 547-1918** for information



A Community Celebration

Major Funding for District Improvements Secured!

- \$47.8 million from the Water Resources Control Board's Clean Water State Revolving Fund program

Save the Date!

- June 5th 11 a.m. - 2 p.m. (time tentative, location TBD)
- Sign-up if you would like to be notified about the event
- State Water Resources Control Board Chair Joaquin Esquivel and local community leaders





Sonoma Water

Kent Gylfe

Director of Engineering

Emma Walton

Operations Manager

Jake Spaulding

Financial Services Division Manager



sonomawater.org